

## 5-YEAR REVIEW

### Ash Meadows milk-vetch (*Astragalus phoenix*)



Photo by Peter Pearsall, U.S. Fish and Wildlife Service

September 2020

## GENERAL INFORMATION

**Species:** Ash Meadows milk-vetch (*Astragalus phoenix*)

**Date listed:** May 20, 1985

**FR citation(s):** 50 FR 20777

**Classification:** Threatened

## BACKGROUND

### **Most recent status review**

The status of Ash Meadows milk-vetch was last reviewed on August 13, 2009, in a 5-year review (Service 2009).

### **FR Notice citation announcing this status review**

84 FR 144. Endangered and Threatened Wildlife and Plants; Initiation of 5-yr Status Reviews of 58 Species in California, Nevada, and the Klamath Basin of Oregon. Published on July 26, 2019.

## ASSESSMENT:

### **Information acquired since the last status review**

This 5-year review was conducted by the U.S. Fish and Wildlife Service's (Service) Southern Nevada Fish and Wildlife Office. Data for this review were solicited from interested parties through a Federal Register notice announcing this review on July 26, 2019. We also contacted the Nevada Division of Forestry (NDOF), the Nevada Natural Heritage Program (NNHP), the United States Bureau of Land Management (BLM) Southern Nevada District Office, the United States Geological Survey (USGS) Henderson Field Station, the Clark County Desert Conservation Program, the Rancho Santa Ana Botanic Garden, the Desert Research Institute, the Nevada Native Plant Society, and participants at the 2019 Nevada Rare Plant Workshop to request any data or information we should consider in our review. Additionally, we conducted a literature search and a review of information in our files.

After review, the Service has concluded that limited new information has become available since the most recent status review. Since the 2009 5-yr review, there has been additional population monitoring and grant specific research conducted, we have provided summaries for this new information below. Additionally, we did not receive any information from the public in response to our Federal Register Notice announcing this 5-year review.

### ***Summary of population monitoring***

At the time of listing, it was estimated that there were 1,000 Ash Meadows milk-vetch individuals (Reveal 1978). In 2001, the Ash Meadows milk-vetch population was estimated to be approximately 1,943 individuals (Morefield 2001). Results from the 2008–2010 Refuge-wide rare plant survey estimate that 15,606 individuals are present on the Refuge (*Table 1*; BIO-WEST 2011). Distribution of Ash Meadows milk-vetch is provided in *Figure 1*.

**Table 1. Summary of Ash Meadows milk-vetch populations and estimates of individuals at Ash Meadows National Wildlife Refuge.**

Population (Service)*	Site Name	BIO-WEST minimum scale occurrence**	BIO-WEST maximum scale occurrence***	Estimated Number of Individuals	Percent of the population
1	Cold Spring	8	2	3,201	20.51
	Purgatory	9	2	487	3.12
	Rogers SW	10	2	150	0.96
	Rogers SE	11	2	141	0.90
	Rogers NE	12	2	12	0.08
2	Jackrabbit Springs S	1	1	74	0.47
	Jackrabbit Springs Rd–Spring Meadows Rd	2	1	295	1.89
	Spring Meadows Rd S	3	1	6,604	42.32
	Jackrabbit Springs Rd	4	1	3,328	21.33
	Collins Ranch S	5	1	1,200	7.69
	Collins Ranch N	6	1	73	0.47
	Crystal Reservoir	7	1	41	0.26
<b>Total</b>				<b>15,606</b>	<b>100</b>

\*Population (Service) = Populations aggregated according to NatureServe 2004.

\*\*BIO-WEST minimum scale occurrence = 0.1 mi or 0.16 km separation distance.

\*\*\*BIO-WEST maximum scale occurrence = 0.6 mi or 1 km separation distance.

### **Research and/or grant-supported activities**

- I. *Contributions of Insect Pollinators to the Reproductive Fitness of 12 Rare Plants on Ash Meadows National Wildlife Refuge (BIO-WEST 2009):*  
This study: (1) identified the floral visitors of 12 rare plant species on the Refuge; (2) identified plant species that support a large portion of the Refuge's insect pollinator community; and (3) identified habitat preferences and locations of insect pollinators nest sites relative to the 12 rare plant species (Tanner *et al.* 2012).  
**Project status:** Completed.
- II. *Inventory of Moisture and Salt Distribution in Soils and Sediments that Support Threatened and Endangered Plants in the Ash Meadows National Wildlife Refuge (Breit in prep):*  
Auger holes and excavations were used to inventory the vertical and lateral distribution of salts in soils and sediment at twenty sites known to contain protected plant species and at eight sites lacking those plants. Two sites were instrumented with soil moisture sensors so that Refuge staff can monitor long-term change. Information from this project will help to identify suitable sites for expansion and restoration of threatened and endangered plants as well as provide baseline data on the full extent of impacts from water extraction within the Amargosa Desert Hydrographic Basin.  
**Project Status:** In prep.
- III. *Landtypes, Ash Meadows National Wildlife Refuge (White Horse Associates 2010):*  
From 2007 to 2009, landtypes were mapped to better define the physical and hydrologic setting for biological studies of rare and endemic species, to help plan future restoration efforts, and to provide information on resources to better inform management decisions on the Refuge. The approach entailed two phases: (1) Stratify the Refuge into preliminary landtype classes distinguished by topographic, geomorphic, hydrologic, soil, and vegetative parameters and (2) Redefine and focus preliminary landtype classes towards the needs of other biological studies, restoration planning, and general management application.  
**Project Status:** Completed.
- IV. *Managing Populations of Rare Plants at Ash Meadows National Wildlife Refuge. I. Demographic Survey and Habitat Quality Assessment to Recover *Astragalus phoenix* (BMP Ecosciences).*  
From 2004 to 2005, demographic and habitat quality data was collected and analyzed to develop new information that could be applied to management, restoration, and recovery of Ash Meadows milk-vetch on the Refuge.  
**Project Status:** Completed.
- V. *Reproductive Biology of the Rare Plants Ash Meadows National Wildlife Refuge (Pavlik and Moore 2012):*  
From 2008 to 2009, subpopulations of eleven rare plant taxa were mapped and marked on the Refuge. The three main goals for the project were: (1) Resolve demographically based patterns of phenology and reproductive output that will help to link rare plant biology to pollinator identification, activity, and habitat requirements; (2) Determine the breeding systems of rare plants from integrating parallel, demographically based studies

of reproductive biology; and (3) Recommend general conservation and restoration prescriptions based on breeding systems and reproductive biology of rare plants on the Refuge.

**Project Status:** Completed.

- VI. *Vegetation Community Mapping and Rare Plants Survey (BIO-WEST 2011):* From 2007 to 2009, vegetation and rare plant studies were conducted to locate and map the distribution of rare and listed plants on the Refuge. In addition, vegetation communities were mapped and classified to the alliance and association scale (most specific levels of vegetation classification) throughout the entire Refuge. The information provided in the 2011 Vegetation Community Mapping and Rare Plants Survey Final Report, will assist with planning future habitat restoration activities (BIO-WEST 2011, entire, plus appendices).

**Project Status:** Completed.

- VII. *Water and Soluble-Salts in Soils Relative to the Distribution of Endemic Plants at Ash Meadows National Wildlife Refuge, Nevada (Breit in prep):*

The objectives of this project are: (1) Describe the distribution and composition of soluble-salts and water in the unsaturated zone within areas with varied populations of endemic plants; (2) Interpret the plant distribution in context of geochemical and hydrologic processes known to be active in arid soils and sediments; and (3) Synthesize the findings to provide a generalized view of changes in the distribution of water and salt that might result from increasing aridity as a result of climate change, modification of hydrologic resources, and development of private in-holdings (Breit and McKelvey 2010, pp. 1–7).

**Project Status:** In prep.

- VIII. *Protocol Survey Report 2014-2019: Monitoring of Nine Endemic Rare Plants (Miller in prep):*

The objectives of this report are: (1) Summarize the existing dataset and evaluate the status of the nine endemic plant species using established viability analysis (Moore O’Leary et al. 2019); (2) Evaluate management objectives for nine endemic plant species at the refuge (Moore O’Leary et al. 2019); and (3) Evaluate protocol performance and implementation as the first independent implementation of the protocol.

**Project Status:** In prep.

## CONCLUSION

After reviewing the best available scientific information, we conclude that Ash Meadows milk-vetch (*Astragalus phoenix*) remains a threatened species. The evaluation of threats affecting the species under the factors in 4(a)(1) of the Act and analysis of the status of the species in our 2009 5-yr Review remains an accurate reflection of the species current status

## RECOMMENDATIONS FOR FUTURE ACTIONS

Over the next five years, the Service should focus on:

- Monitor compliance with Nevada Revised Statute Order 1197A (January 12, 2018), Curtailment of New Appropriations of Groundwater within the Amargosa Valley Hydrographic Basin 230, that prohibits new applications for water or water diversions within 25 miles of Devils Hole (and by proximity Ash Meadows NWR). Order 1197A supersedes 1197, which imposed similar regulations at 10 miles from Devils Hole. Water levels in Devils Hole are affected by pumping centers in the Amargosa Desert and the Ash Meadows groundwater basins (Halford and Jackson 2020).
- Collaborate with the Ash Meadows NWR to implement the Desert National Wildlife Refuge Complex – Ash Meadows, Desert, Moapa Valley, and Pahrangat National Wildlife Refuges Final Comprehensive Conservation Plan and Environmental Impact Statement, Volume I – August 2009 (Service 2009) and also the Draft Ash Meadows Natural Resource Management Plan in review (Service 2020);
- Support Ash Meadows milk-vetch research at the Ash Meadows NWR to monitor the population as identified in the Recovery Plan for the Endangered and Threatened Species of Ash Meadows (Service 1990);
- Monitor the future activity of mineral rights in the Ash Meadows area. The BLM ACEC surrounding the refuge is withdrawn from mining and entry until 2029 (PLO# 7737, signed November 2, 2009), but requires renewal every 20 years. Mining can still occur on private inholdings within the refuge, but no active mining permits exist at this time.
- Continue to research and implement a jackrabbit exclusion study to determine the impacts jackrabbits are having on reproduction of Ash Meadows milk-vetch.

**Lead Field Supervisor, Fish and Wildlife Service**

Approve \_\_\_\_\_ Date \_\_\_\_\_

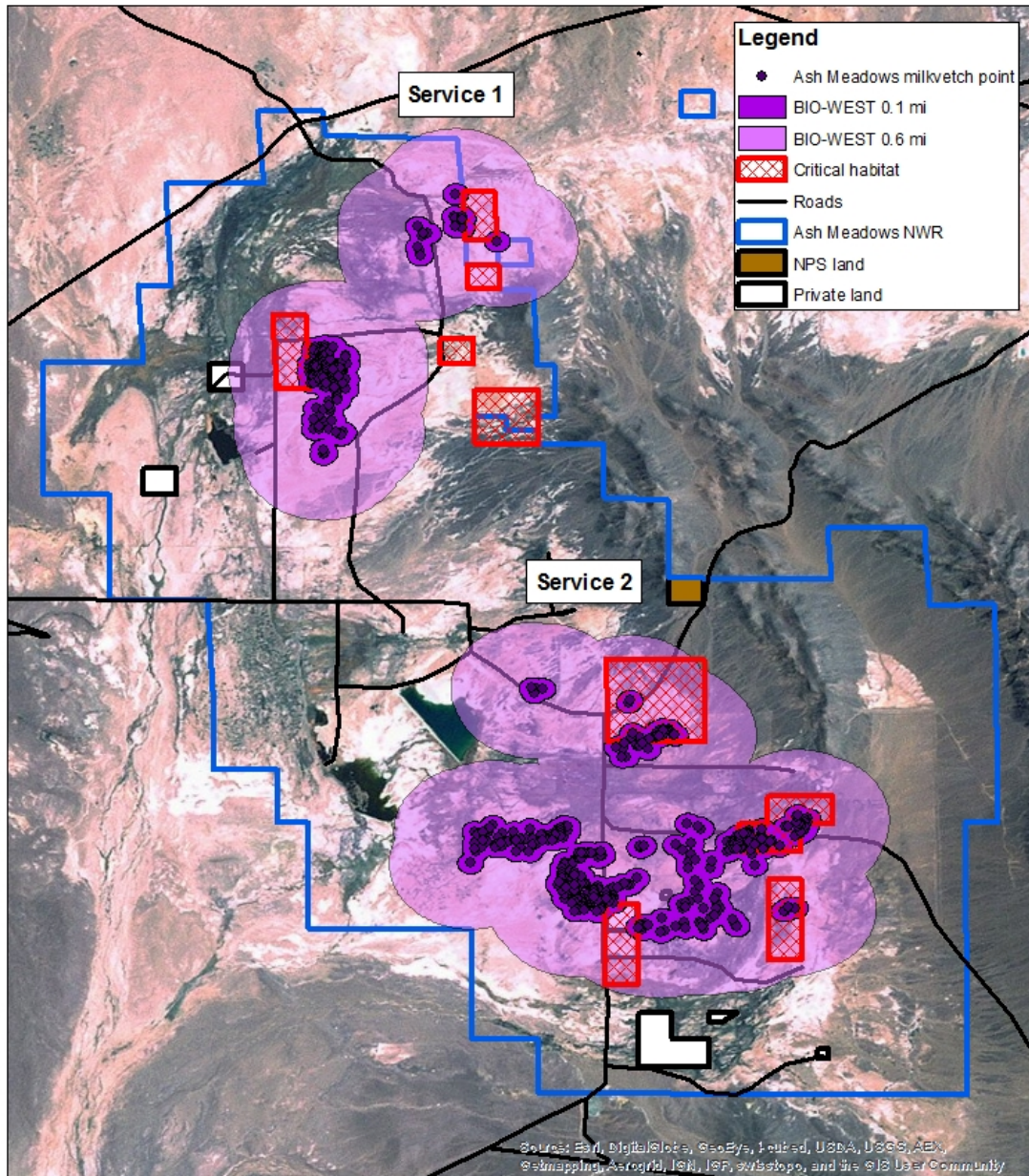
## LITERATURE CITED

- Bio-West, Inc. 2009. Ash Meadows National Wildlife Refuge: Pollinator study 2008 annual report. Report submitted to U.S. Fish and Wildlife Service by Bio-West, Inc., Logan, Utah. 15pp.
- Bio-West, Inc. 2011. Ash Meadows National Wildlife Refuge: Vegetation community mapping and rare plant survey; final report. Report submitted to U.S. Fish and Wildlife Service by Bio-West, Inc., Logan, Utah. 207pp plus appendices.
- Breit, G.N. In prep. Inventory of moisture and salt distribution in soils and sediment that support threatened and endangered plants in the ash Meadows National Wildlife Refuge.
- Halford, K.J., and Jackson, T.R. 2020. Groundwater characterization and effects of pumping in the Death Valley regional groundwater flow system, Nevada and California, with special reference to Devils Hole: U.S. Geological Survey Professional Paper 1863, 178 pp.
- Miller, Alice. 2019. Draft 20191217. Protocol Survey report 2014-2019 monitoring of nine endemic rare plants (FF08RASH00-053). Pyramid Botanical Consultants. 74pp.
- Moore-O'Leary, K.A, K.E. Tanner, and C.R. Levine. 2019 Site specific protocol for monitoring abundance and traits of nine endemic rare plants at Ash Meadows National Wildlife Refuge draft.
- Morefield, J.D. 2001. Nevada rare plant atlas: *Astragalus phoenix*. Report submitted to the U.S. Fish and Wildlife Service by the Nevada Natural Heritage Program, Carson City, Nevada.
- Pavlik, B.M. and K.A. Moore. 2012. Reproductive Biology of Rare Plants of Ash Meadows National Wildlife Refuge. Report submitted to U.S. Fish and Wildlife Service and Bio-West, Inc., by BMP Ecosciences, Oakland and Davis, California. 123pp.
- Reveal, J.L. 1978. Status report on *Astragalus phoenix* [Barneby] (Ash Meadows milk-vetch). Unpublished draft report prepared for the Department of the Interior. 30pp.
- [Service] U.S. Fish and Wildlife Service. 1990. Recovery plan for the endangered and threatened species of Ash Meadows, Nevada. U.S. Fish and Wildlife Service, Portland, Oregon. 123 pp.
- Service. 2009. Ash Meadows milk-vetch (*Astragalus phoenix*) Five-Year Review. 33 pp.
- Service. 2020. Ash Meadows National Wildlife Refuge natural resource management plan draft.
- Tanner, D.A., N.F. Boehme, C.M. Clark, and J.P. Pitts. 2012. The contributions of insect pollinators to the reproductive fitness of 12 rare plants on Ash Meadows National Wildlife Refuge. Report submitted to U.S. Fish and Wildlife Service by BIO-WEST, Inc., Logan, Utah. 65 pp.

White Horse Associates. 2010. Landtypes, Ash Meadows NWR. Report submitted to Ash Meadows National Wildlife Refuge by White Horse Associates, Smithfield, Utah. 1445 pp.



### Distribution of Ash Meadows milkvetch in Nye County, Nevada



Created By: James Harter  
Map Date: June 10, 2013  
Source: BIO\_WEST and USFWS



Figure 1. Distribution of Ash Meadows milk-vetch in Nye County, Nevada. Circles represent individual plants. BIO-WEST's 0.16 km (dark purple) and 1 km (transparent purple) separation distances are depicted on the map for reference; however, populations are highlighted by the Service population number derived according to NatureServe mapping standards (NatureServe 2004).